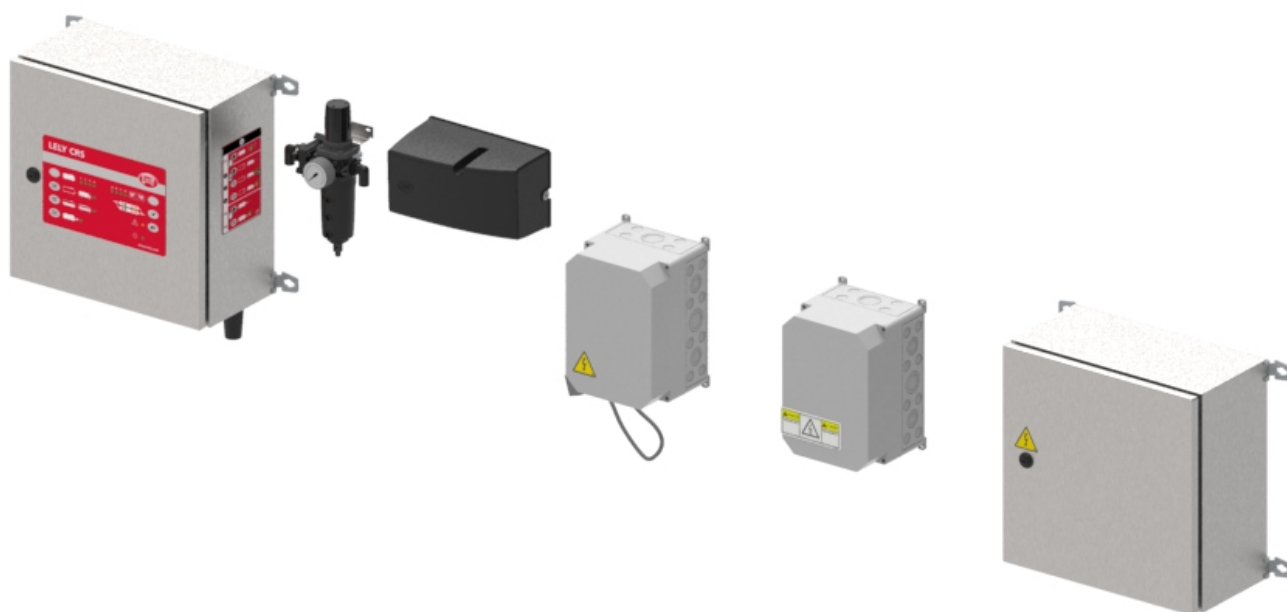


Lely Astronaut

CRS M3



Parts list

5.1004.8635.0 B

English Original





INTENTIONALLY BLANK

Preface

Applicability

Type number:	As from serial number:
5.1004.6881.0	

Spare Parts

When ordering spare parts it is important that you are aware of the type and serial number of your machine. Use only genuine LELY parts.

Criticality

Criticality = Bulk, 0, 1, 2

- Bulk = Bulk item.
- 0 = Not critical.
- 1 = Not very critical.
- 2 = Critical.

Explanation of Signs Used in the Parts List

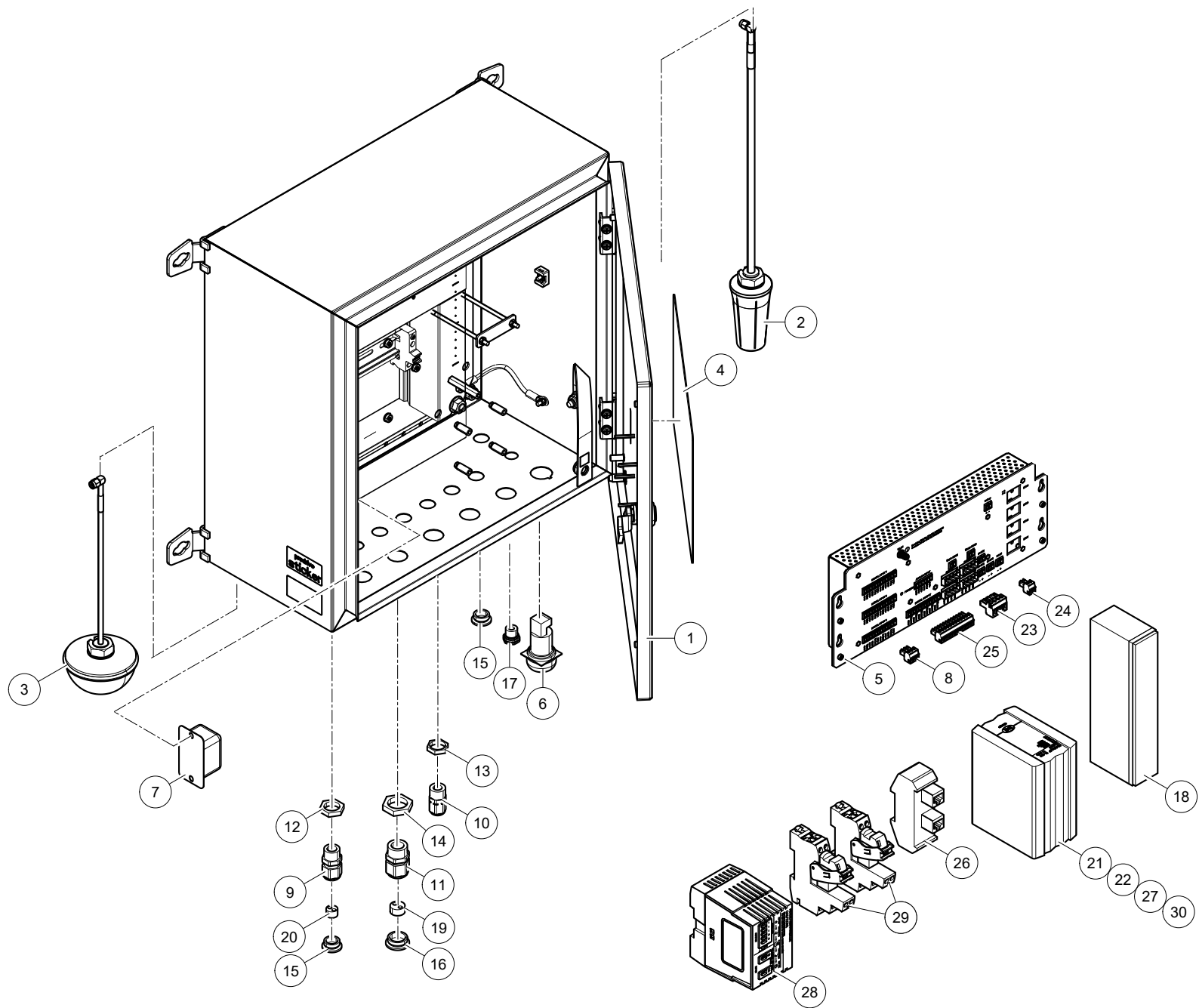
[R] / [RH]	By RH or LH version the position of the part is meant, seen from the rear of the machine.
[L] / [LH]	
[~]	E.g.: LH version is not similar to the RH version, which is actually shown.
[#]	Not available separately.



INTENTIONALLY BLANK

Table of Contents

A	CRS M3	6
A-1	Cabinet	6
A-2	Cabinet (CRS M3 extension)	8
A-3	Door	10
A-4	Valve block 1	12
A-5	Valve block 2	14
A-6	Reducer	16
A-7	Spare Cables	18
B	Power Box	20
B-1	Power Box	20
B-2	Power Box (NA)	22
C	Network Box	24
C-1	Network Box	24



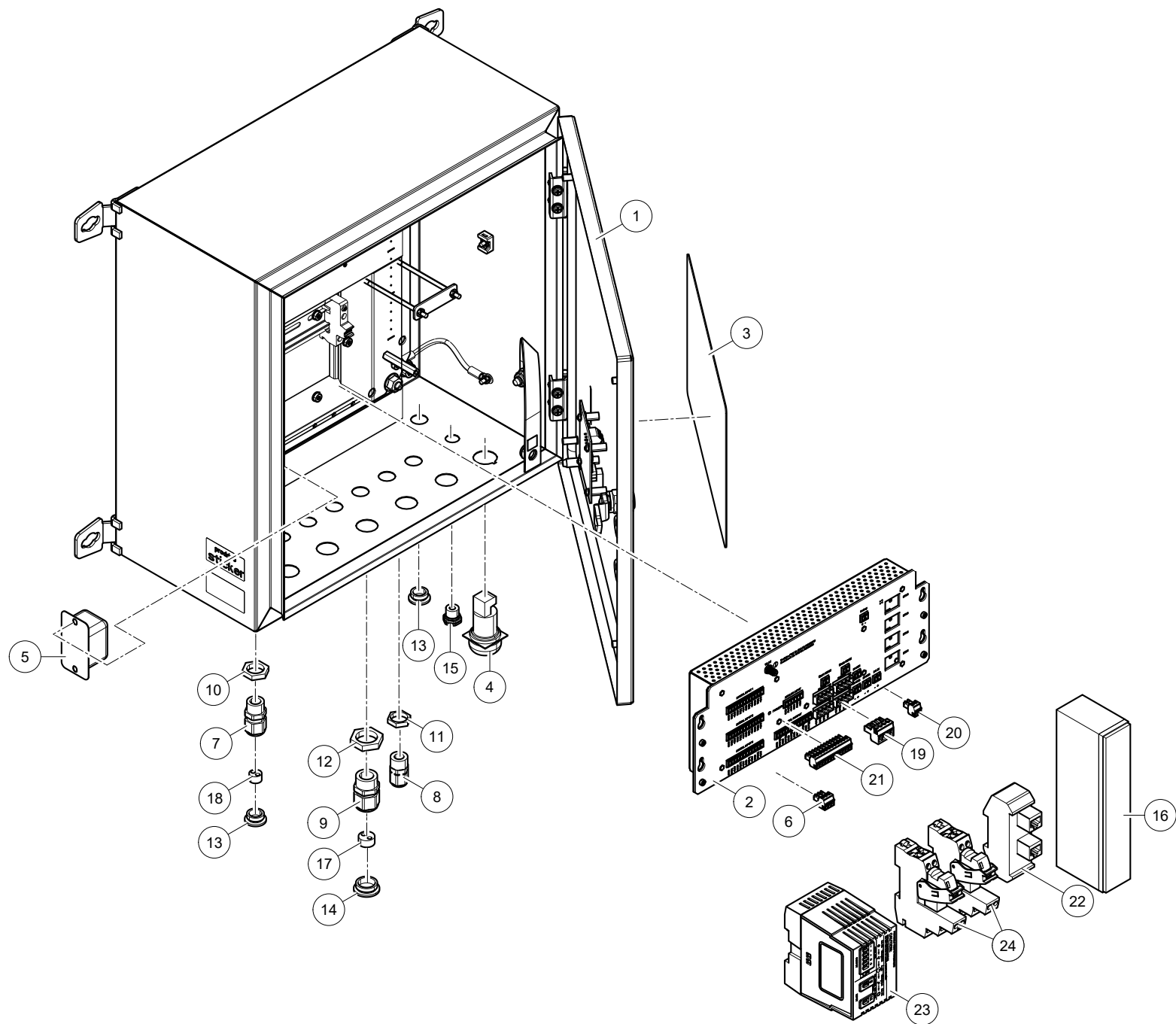


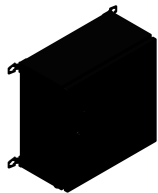
Astronaut

CRS M3

5.1004.6881.0

Ref.	Part No	Qty.	Description	Techn. info	Criticality	Remark
1	5.1004.6770.0	1	Door	Incl. CRS M3 user interface		(see page 10)
2	5.1004.6814.0	1	Antenna	GSM		
3	5.1004.6879.0	1	Antenna	WIFI		
4	#####	1	Not separately			
5	6.2001.0282.0	1	Control box	CRS M3		
6	9.1185.0998.0	1	Buzzer	12-24V AC/DC		
7	9.1185.1052.0	1	Filter	EMC		
8	9.1186.0543.0	1	Connector	C 1.5/3-ST 3.81		
9	9.1186.0808.0	6	Swivel	M16		
10	9.1186.0809.0	1	Swivel	Brass M16 (EMC)		
11	9.1186.0810.0	6	Swivel	M20		
12	9.1186.0811.0	6	Swivel Nut	M16		
13	9.1186.0812.0	1	Swivel nut	M16 (EMC)		
14	9.1186.0813.0	6	Swivel nut	M20		
15	9.1186.0814.0	5	Blind Swivel	M16		
16	9.1186.0815.0	5	Blind Swivel	M20		
17	9.1186.0995.0	1	Filter	M12X1.5		
18	9.1190.0048.0	1	Battery			
19	9.1190.0262.0	5	Swivel insert	2x4mm hole (M20)		
20	9.1190.0276.0	1	Gland insert	M16 2x4		
21	9.1190.0320.0	1	Modalarm	North America and parts of South America		
22	9.1190.0321.0	1	Modalarm	Japan and South Korea		
23	9.1190.0332.0	2	Connector	MSTBT 2.5/4-ST-5.08		
24	9.1190.0333.0	2	Connector	MC 1.5/2-ST-3.81		
25	9.1190.0334.0	3	Connector	MC 1.5/12-ST-3.81		
26	9.1190.0452.0	1	Connection Module (Type 2)	(Type 2) RJ45		
27	9.1190.0772.0	1	Modalarm	EU and others		
28	9.1190.0873.0	1	Power source	1-Phase 24VDC/ 2.5A PSDC24/2.5		
29	9.1190.0875.0	2	Relay	PR1-RSC3-LDP-24DC/21		
30	9.1190.7700.0	1	Modalarm	Brazil & Australia		



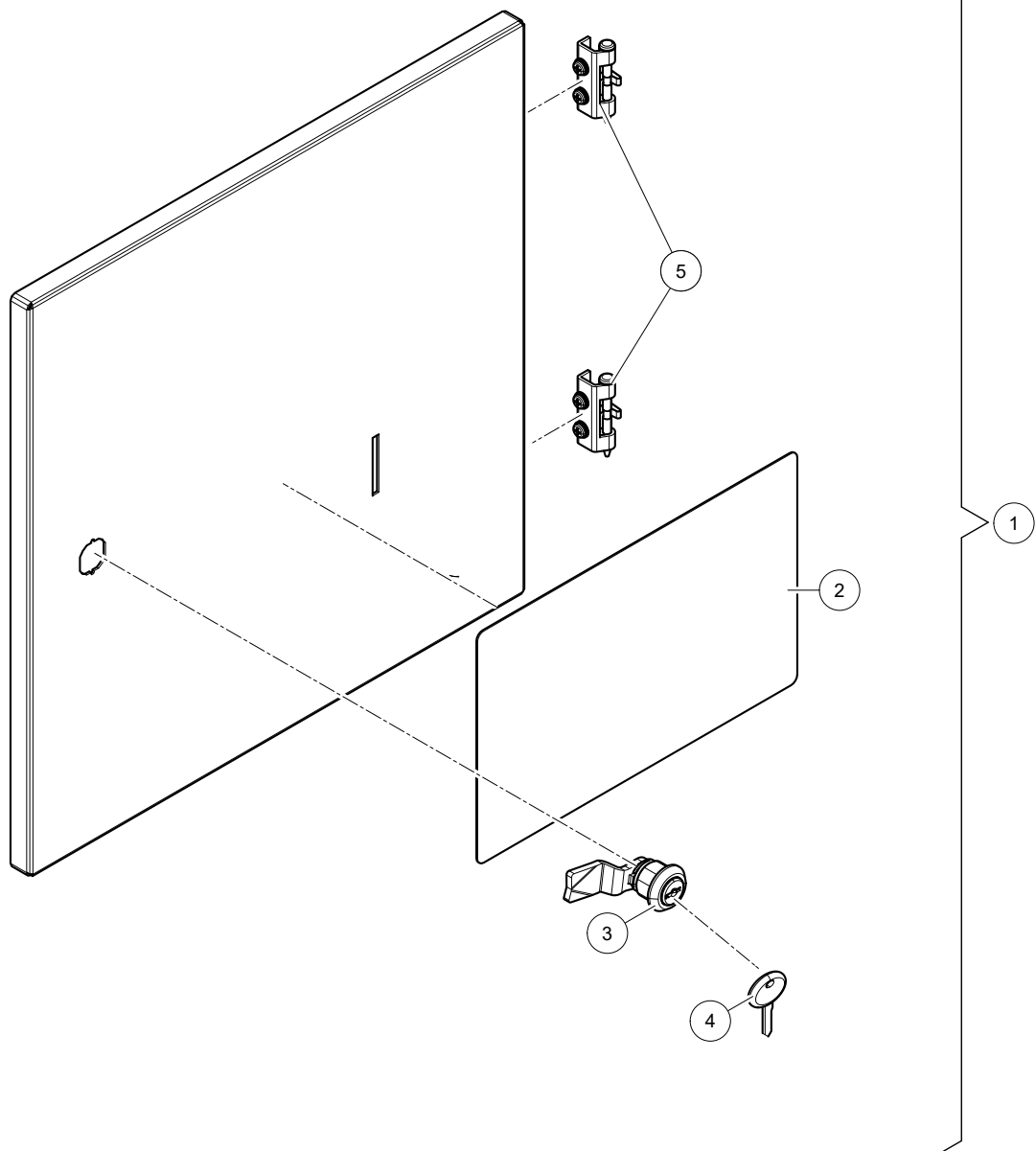


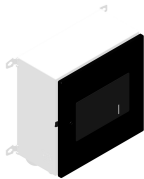
Astronaut

CRS M3

5.1004.6881.0

Ref.	Part No	Qty.	Description	Techn. info	Criticality	Remark
1	5.1004.6770.0	1	Door	Incl. CRS M3 user interface		(see page 10)
2	6.2001.0282.0	1	Control box	CRS M3		
3	9.1170.1115.0	1	Decal	CRS M3 Extension box		
4	9.1185.0998.0	1	Buzzer	12-24V AC/DC		
5	9.1185.1052.0	1	Filter	EMC		
6	9.1186.0543.0	2	Connector	C 1.5/3-ST 3.81		
7	9.1186.0808.0	6	Swivel	M16		
8	9.1186.0809.0	1	Swivel	Brass M16 (EMC)		
9	9.1186.0810.0	6	Swivel	M20		
10	9.1186.0811.0	6	Swivel Nut	M16		
11	9.1186.0812.0	1	Swivel nut	M16 (EMC)		
12	9.1186.0813.0	6	Swivel nut	M20		
13	9.1186.0814.0	5	Blind Swivel	M16		
14	9.1186.0815.0	5	Blind Swivel	M20		
15	9.1186.0995.0	1	Filter	M12X1.5		
16	9.1190.0048.0	1	Battery			
17	9.1190.0262.0	5	Swivel insert	2x4mm hole (M20)		
18	9.1190.0276.0	1	Gland insert	M16 2x4		
19	9.1190.0332.0	2	Connector	MSTBT 2.5/4-ST-5.08		
20	9.1190.0333.0	2	Connector	MC 1.5/2-ST-3.81		
21	9.1190.0334.0	3	Connector	MC 1.5/12-ST-3.81		
22	9.1190.0452.0	1	Connection Module (Type 2)	(Type 2) RJ45		
23	9.1190.0873.0	1	Power source	1-Phase 24VDC/ 2.5A PSDC24/2.5		
24	9.1190.0875.0	2	Relay	PR1-RSC3-LDP-24DC/21		

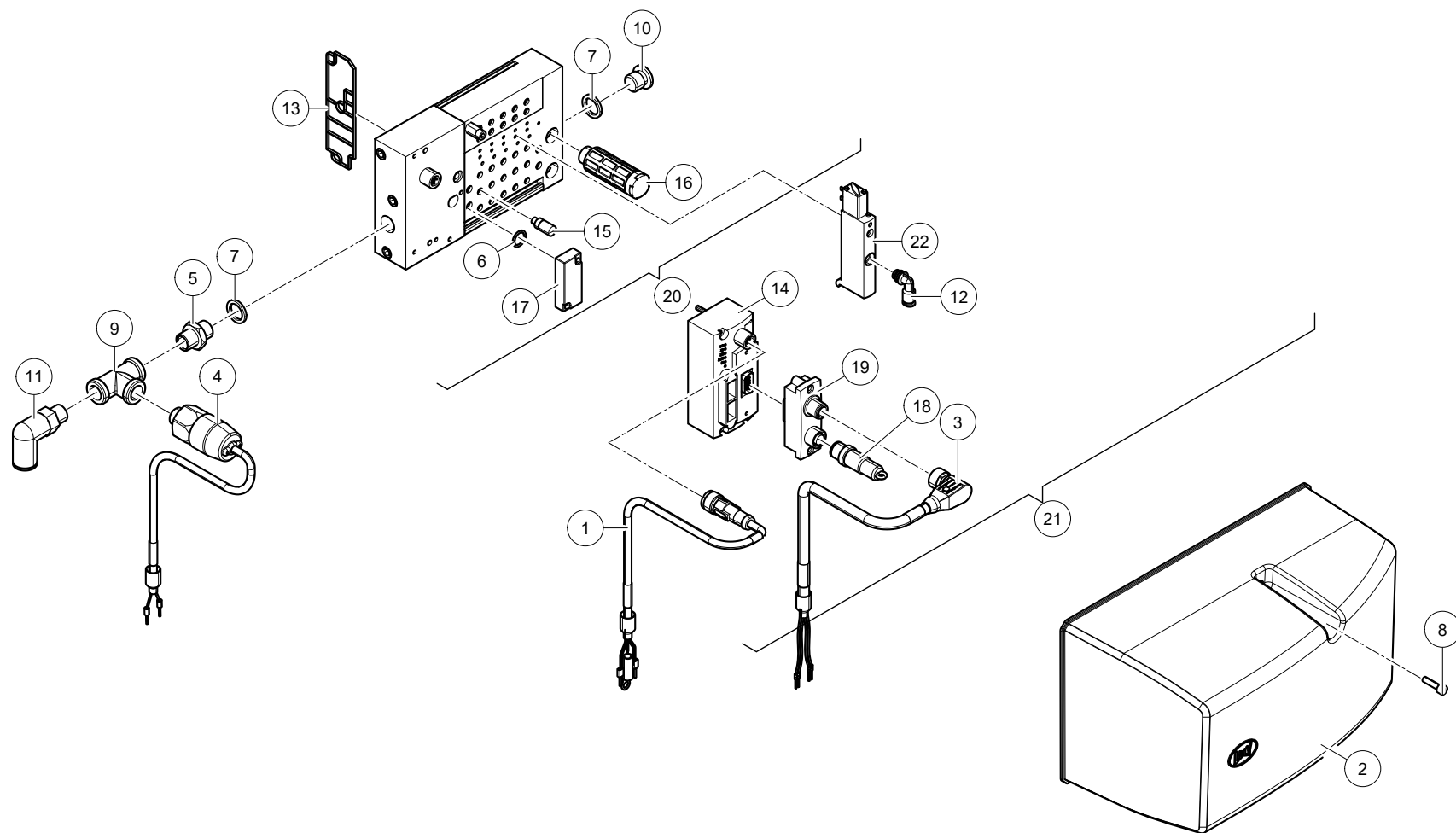




Astronaut CRS M3 5.1004.6881.0

Ref.	Part No	Qty.	Description	Techn. info	Criticality	Remark
1	5.1004.6770.0	1	Door	Incl. CRS M3 user interface		
2	#####	1	Not separately			
3	9.1185.1054.0	1	Lock	ELDON ALL508		
4	9.1185.1055.0	2	Key	n° M21323		
5	9.1185.1062.0	1	Hinge			



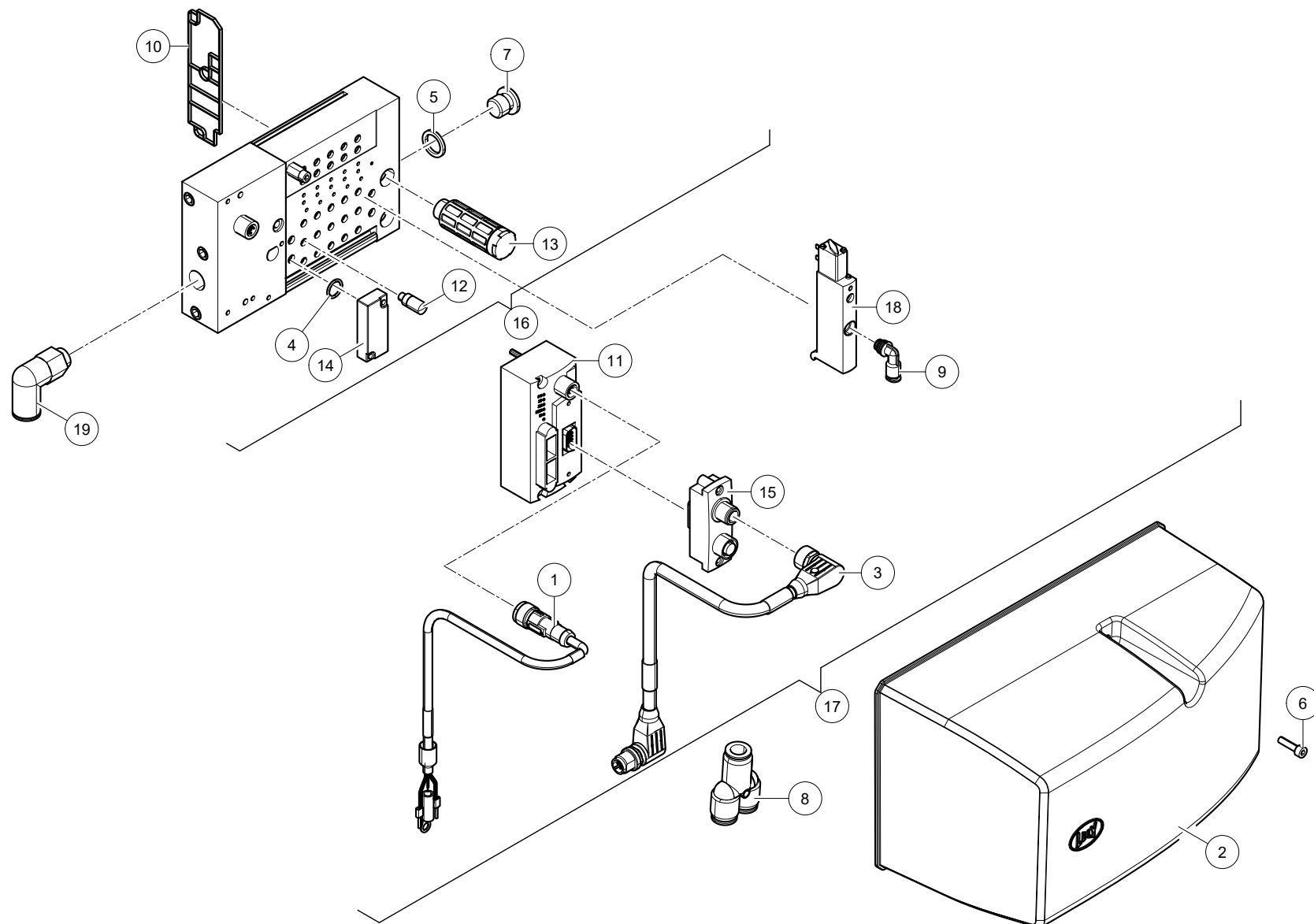




Astronaut CRS M3 5.1004.6881.0

Ref.	Part No	Qty.	Description	Techn. info	Criticality	Remark
1	5.1004.6603.0	1	Cable	L=2m (Power)		
2	5.1004.6630.0	1	Cover			
3	5.1004.6758.0	1	Cable	L=2m (CAN: CRS - Air Valves Block)		
4	5.1004.6766.0	1	Sensor	Pressure 4.5 bar (L=3m)		
5	5.4006.1468.0	1	Red. nipple	1/4" Reduces inner \varnothing to 5.5 mm		
6	9.1043.0107.1	1	O-ring	10x15 NBR 70 shore		
7	9.1049.0040.5	2	Sealing ring	1/4"		
8	9.1057.0084.6	1	S.h. bolt	M4x16 DIN912-A2 s/s		
9	9.1129.0049.4	1	T-piece	1/4" s/s		
10	9.1131.0020.1	1	Plug			
11	9.1138.0176.5	1	Plug-in coupling	1/4"x10mm (└)		
12	9.1138.0323.4	5	Plug-in coupling	4mm Low (└)		
13	9.1138.0864.5	2	Gasket			
14	9.1138.0865.6	1	Node terminal	Air valves block		
15	9.1138.0866.0	1	Silencer	UC-M5		
16	9.1138.0867.1	2	Silencer	U-1/4"		
17	#####	1	Not separately			
18	9.1138.0965.0	1	Terminal resistor	M12		
19	9.1138.0966.0	1	Connection block	M12		
20	9.1138.1025.0	1	Kit	Air Valves Block M4use/CRS M3		
21	9.1138.1062.0	1	Valve block			
22	9.1138.0821.4	5	Valve			



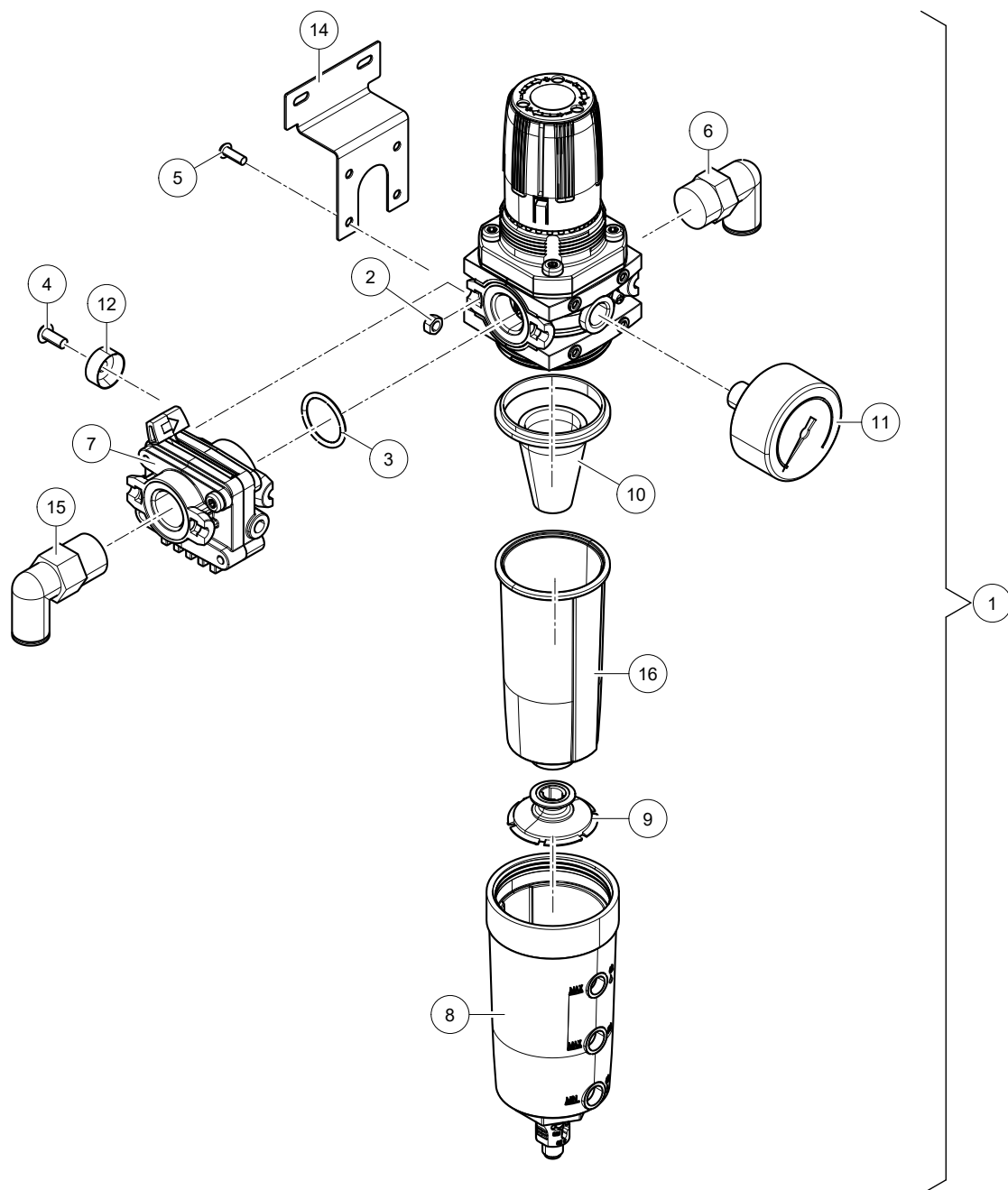




Astronaut CRS M3 5.1004.6881.0

Ref.	Part No	Qty.	Description	Techn. info	Criticality	Remark
1	5.1004.6603.0	1	Cable	L=2m (Power)		
2	5.1004.6630.0	1	Cover			
3	5.1004.6760.0	1	Cable	L=1.1m (CAN: Air Valves Block - Air Valves Block)		
4	9.1043.0107.1	1	O-ring	10x15 NBR 70 shore		
5	9.1049.0040.5	1	Sealing ring	1/4"		
6	9.1057.0084.6	1	S.h. bolt	M4x16 DIN912-A2 s/s		
7	9.1131.0020.1	1	Plug			
8	9.1138.0165.1	1	Plug-in coupling	10-10-10mm (Y)		
9	9.1138.0323.4	5	Plug-in coupling	4mm Low (└)		
10	9.1138.0864.5	2	Gasket			
11	9.1138.0865.6	1	Node terminal	Air valves block		
12	9.1138.0866.0	1	Silencer	UC-M5		
13	9.1138.0867.1	2	Silencer	U-1/4"		
14	#####	1	Not separately			
15	9.1138.0966.0	1	Connection block	M12		
16	9.1138.1025.0	1	Kit	Air Valves Block M4use/CRS M3		
17	9.1138.1063.0	1	Valve block			
18	9.1138.0821.4	5	Valve			
19	9.1138.1078.0	1	Plug-in coupling	1/4" x 10mm (└)		



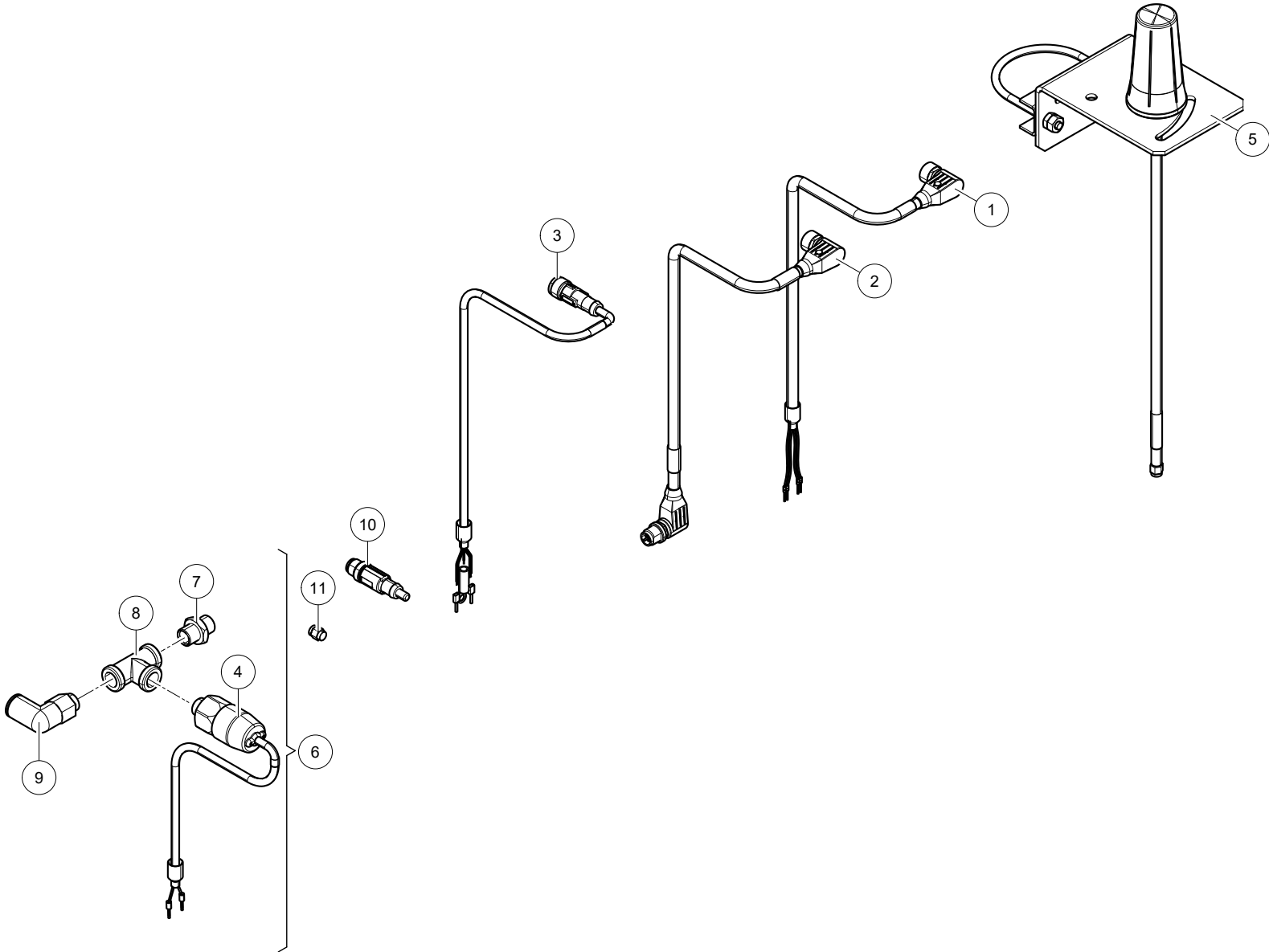




Astronaut CRS M3 5.1004.6881.0

Ref.	Part No	Qty.	Description	Techn. info	Criticality	Remark
1	5.1004.6867.0	1	Reducer			
2	9.1029.0042.6	2	Nut	M5 DIN934-A2-2 s/s		
3	9.1043.0187.0	1	O-ring	23x2.50 NBR		
4	9.1057.0402.2	2	Button head screw	M5x12 ISO7380-A2 s/s		
5	9.1057.0419.5	4	Button head screw	M4x12 ISO7380 A2-70 s/s		
6	9.1138.0204.5	1	Plug-in coupling	PL 10-G04		
7	9.1138.0892.0	1	Valve	Manual on/off valve		
8	9.1138.0893.0	1	Filter			
9	9.1138.0894.0	1	Filter			
10	9.1138.0895.0	1	Cartridge	Active Carbon		
11	9.1138.0896.0	1	Pressure gauge	1/4"		
12	9.1138.0898.0	2	Coupling			
13	9.1138.1059.0	1	Cap	Active carbon filter		
14	#####	1	Not separately			
15	9.1138.1082.0	1	Plug-in coupling	1/2" x 10mm (L)		
16	9.1138.1247.0	1	Bowl inner			



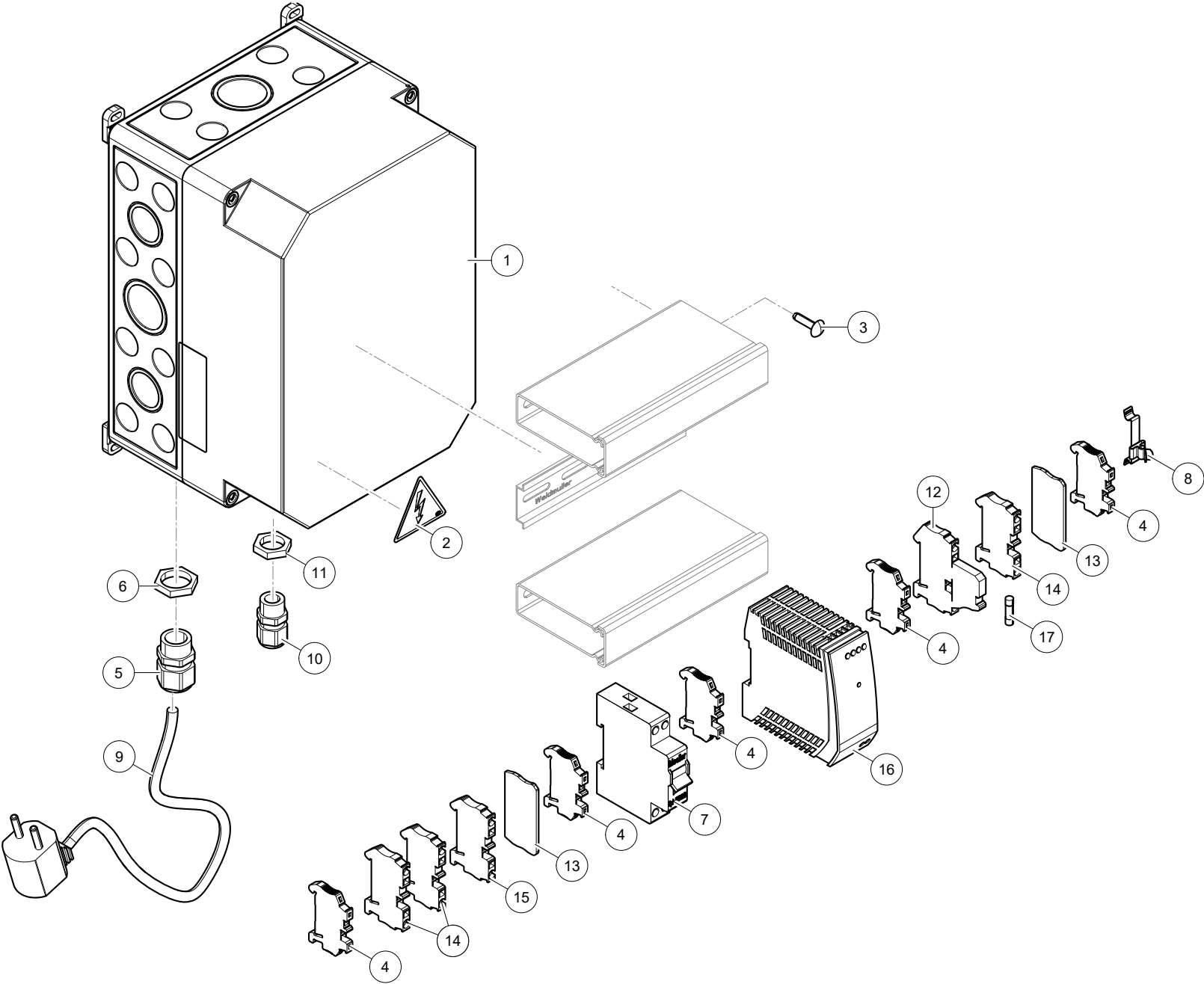


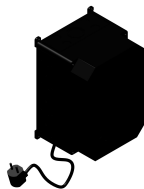


Astronaut CRS M3 5.1004.6881.0

Ref.	Part No	Qty.	Description	Techn. info	Criticality	Remark
1	5.1004.6759.0	1	Cable	L=20m (CAN: CRS - Air Valves Block)		
2	5.1004.6761.0	1	Cable	L=20m (CAN: Air Valves Block - Air Valves Block)		
3	5.1004.6762.0	1	Cable	L=20m (Power)		
4	5.1004.6767.0	1	Sensor	Pressure (L=20m)		
5	5.1004.6911.0	1	Antenna	GSM (L=5m, bracket is included)		
6	5.1004.6925.0	1	Kit			
7	5.4006.1468.0	1	Red. nipple	1/4" Reduces inner \varnothing to 5.5 mm		
8	9.1129.0049.4	1	T-piece	1/4" s/s		
9	9.1138.1078.0	1	Plug-in coupling	1/4" x 10mm (_)		
10	9.1186.1094.0	1	Resistor			
11	9.1190.7200.0	1	Terminal resistor	Wifi		



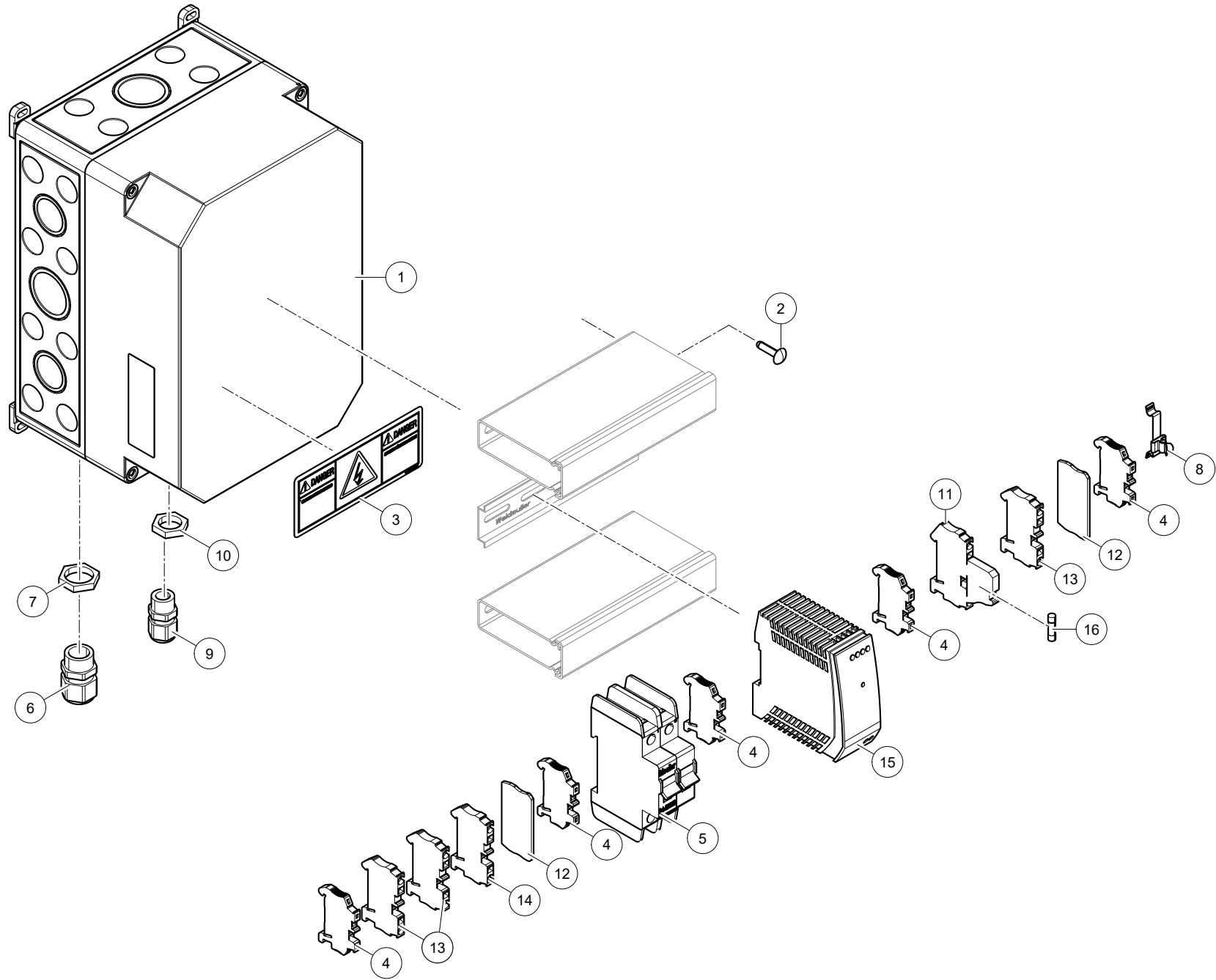




Astronaut CRS M3 5.1004.6881.0

Ref.	Part No	Qty.	Description	Techn. info	Criticality	Remark
1	5.1004.7115.0	1	Box			
2	5.2011.0845.0	1	Decals	High voltage		
3	9.1152.0025.0	4	Blind rivet	4.9x18.5 PA6.6		
4	9.1185.0840.6	5	End bracket			
5	9.1186.0248.6	1	Swivel	M20x1.5		
6	9.1186.0249.0	1	Swivel nut	M20x1.5		
7	9.1186.0568.0	1	Automatic fuse	PLN6-C6/1N		
8	#####	1	Not separately			
9	#####	1	Not separately			
10	9.1186.0808.0	1	Swivel	M16		
11	9.1186.0811.0	1	Swivel Nut	M16		
12	9.1190.0096.0	1	Terminal	Fuse modular terminal block		
13	#####	2	Not separately			
14	#####	3	Not separately			
15	#####	1	Not separately			
16	9.1190.8001.0	1	Power source	UNO_PS_1AC_24DC_60W		
17	9.1190.9802.0	1	Fuse	Glass fuse rated 250V, 1.6A, 5x20mm		



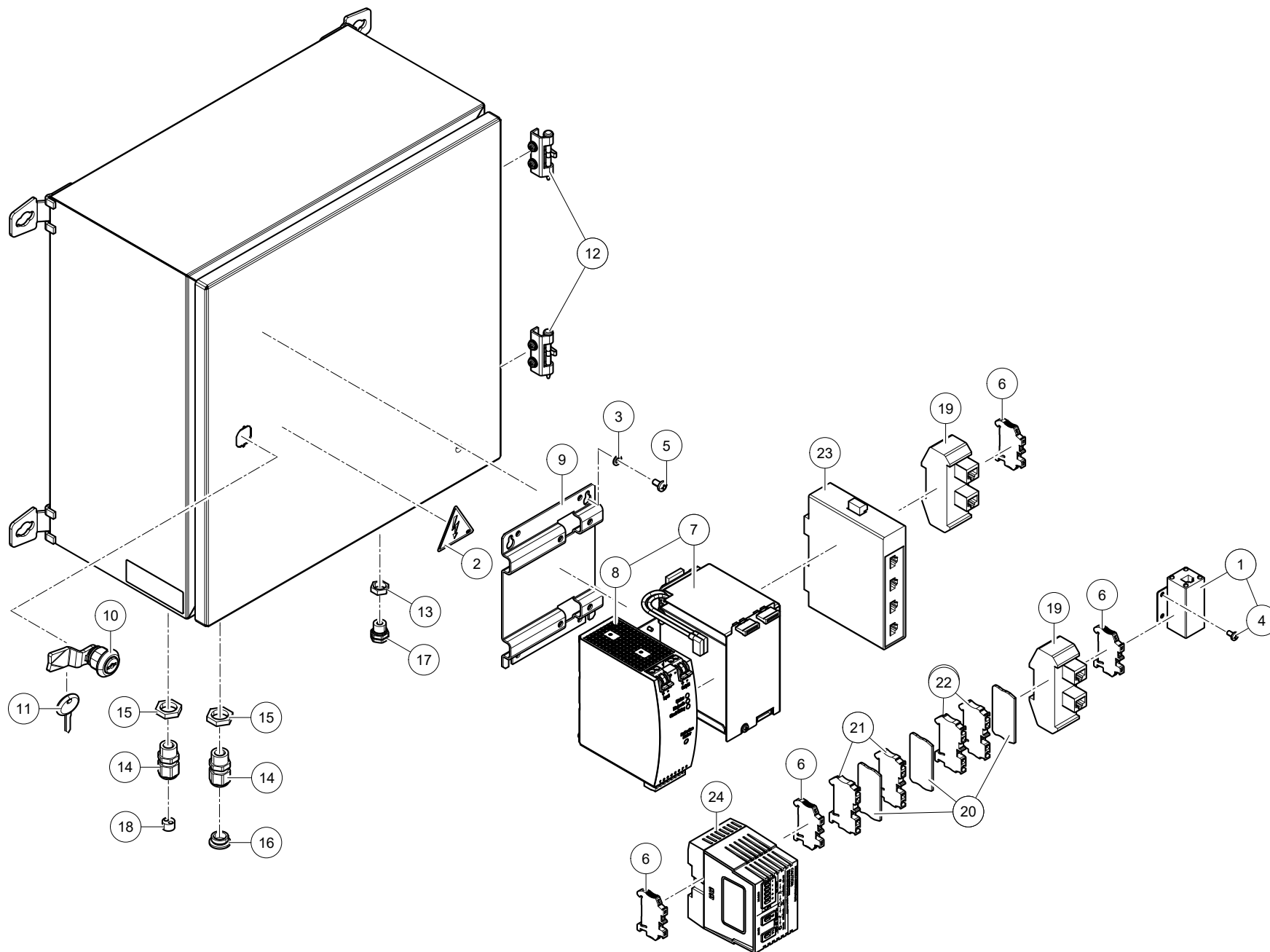




Astronaut CRS M3 5.1004.6881.0

Ref.	Part No	Qty.	Description	Techn. info	Criticality	Remark
1	5.1004.7115.0	1	Box			
2	9.1152.0025.0	4	Blind rivet	4.9x18.5 PA6.6		
3	9.1170.0583.0	1	Decal	"Electrocution hazard"		
4	9.1185.0840.6	5	End bracket			
5	9.1185.0909.0	1	Automatic circuit-breaker			
6	9.1186.0248.6	1	Swivel	M20x1.5		
7	9.1186.0249.0	1	Swivel nut	M20x1.5		
8	#####	1	Not separately			
9	9.1186.0808.0	1	Swivel	M16		
10	9.1186.0811.0	1	Swivel Nut	M16		
11	9.1190.0096.0	1	Terminal	Fuse modular terminal block		
12	#####	2	Not separately			
13	#####	3	Not separately			
14	#####	1	Not separately			
15	9.1190.8001.0	1	Power source	UNO_PS_1AC_24DC_60W		
16	9.1190.9802.0	1	Fuse	Glass fuse rated 250V, 1.6A, 5x20mm		







Astronaut CRS M3 5.1004.6881.0

Ref.	Part No	Qty.	Description	Techn. info	Criticality	Remark
1	5.1004.6932.0	1	Set	LIGHTNING SURGE PROTECTOR + FASTENERS		
2	5.2011.0845.0	1	Decals	High voltage		
3	9.1048.0128.0	4	Washer	Washer A 5.3 DIN125-St galv.		
4	9.1059.0031.0	2	Button head screw	DIN 7985-H		
5	#####	4	Not separately	DIN7985-H		
6	9.1185.0840.6	7	End bracket			
7	#####	1	Not separately			
8	9.1185.0879.0	1	UPS			
9	9.1185.0996.0	1	Bracket	Bracket puls ZM1.UBC10		
10	9.1185.1054.0	1	Lock	ELDON ALL508		
11	9.1185.1055.0	2	Key	n° M21323		
12	9.1185.1062.0	1	Hinge			
13	9.1186.0245.3	1	Swivel nut	M12X1.5 (EMC)		
14	9.1186.0808.0	11	Swivel	M16		
15	9.1186.0811.0	11	Swivel Nut	M16		
16	9.1186.0814.0	9	Blind Swivel	M16		
17	#####	1	Not separately			
18	9.1190.0276.0	11	Gland insert	M16 2x4		
19	9.1190.0452.0	8	Connection Module (Type 2)	(Type 2) RJ45		
20	#####	3	Not separately			
21	#####	2	Not separately			
22	#####	2	Not separately			
23	9.1190.0520.0	2	Switch			
24	9.1190.0873.0	1	Power source	1-Phase 24VDC/ 2.5A PSDC24/2.5		





INTENTIONALLY BLANK

Lely Industries N.V.

Cornelis van der Lelylaan 1

NL-3147 PB Maassluis

Tel +31 (0)88 - 12 28 221

Fax +31 (0)88 - 12 28 222

